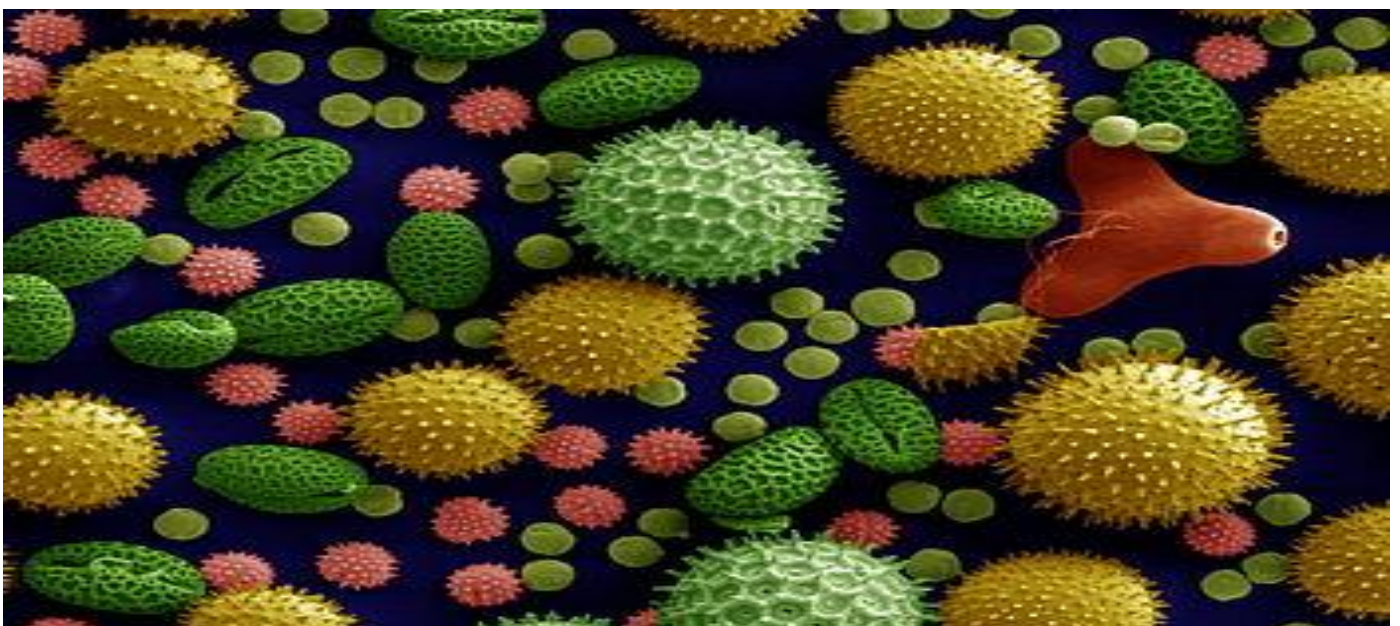
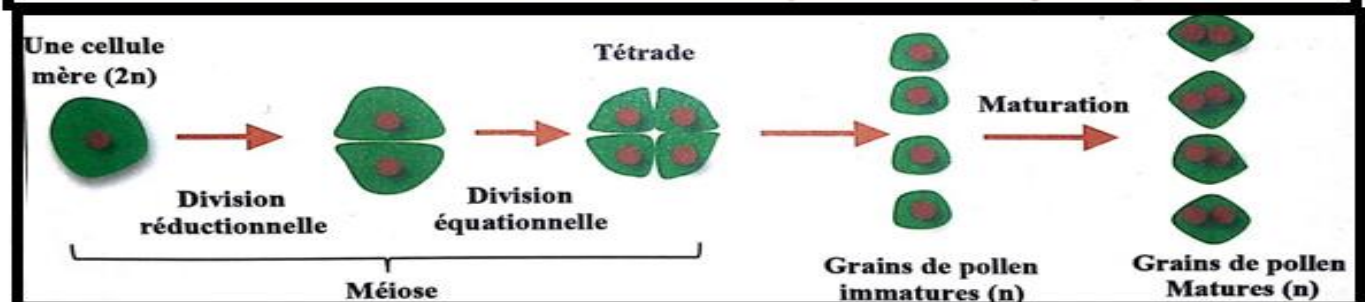
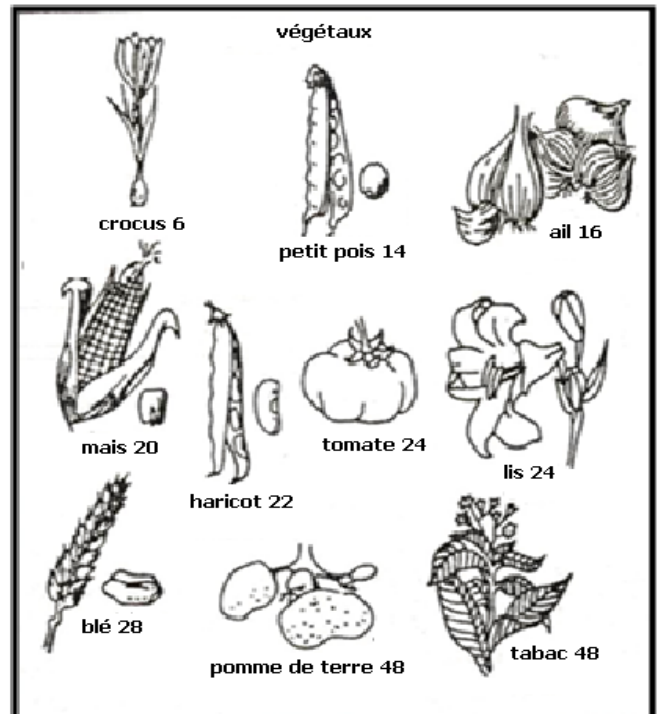
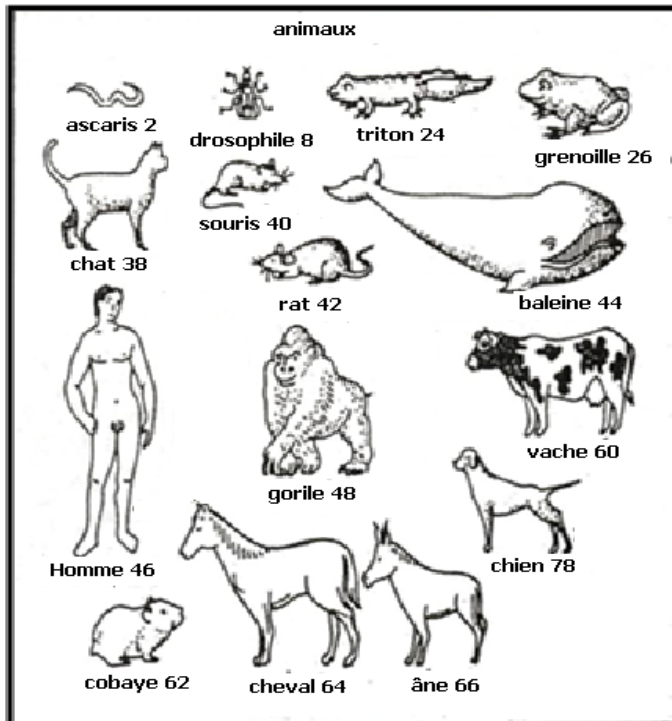
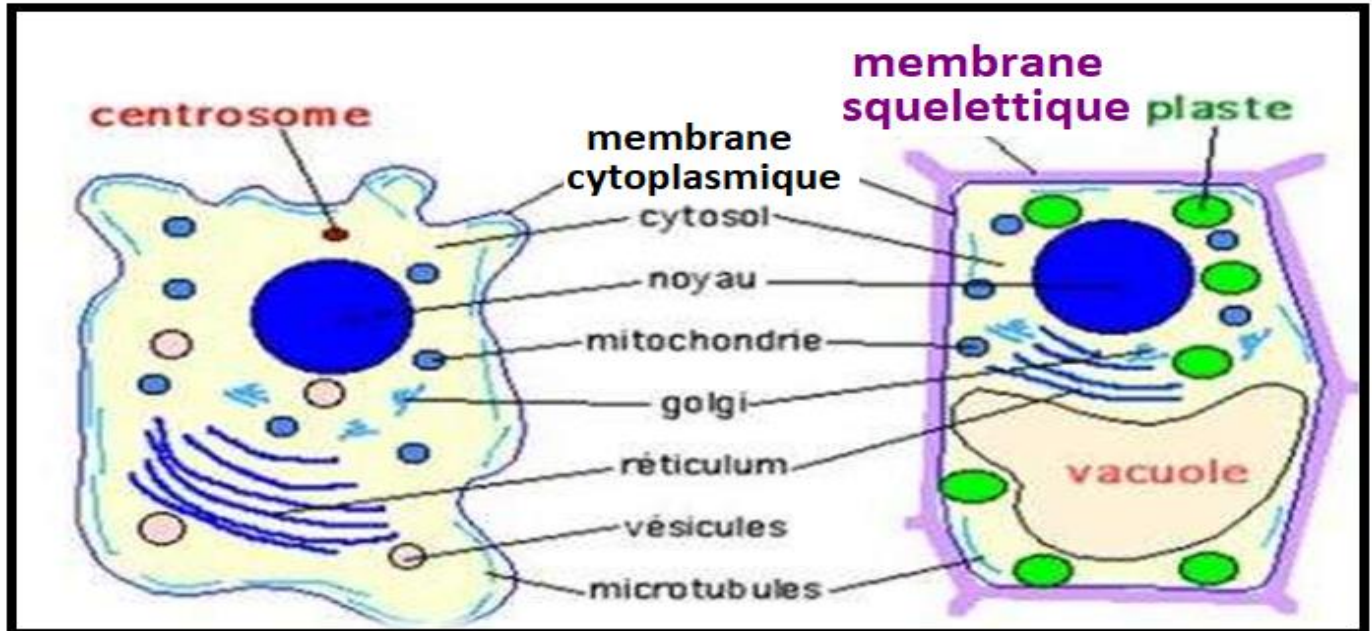
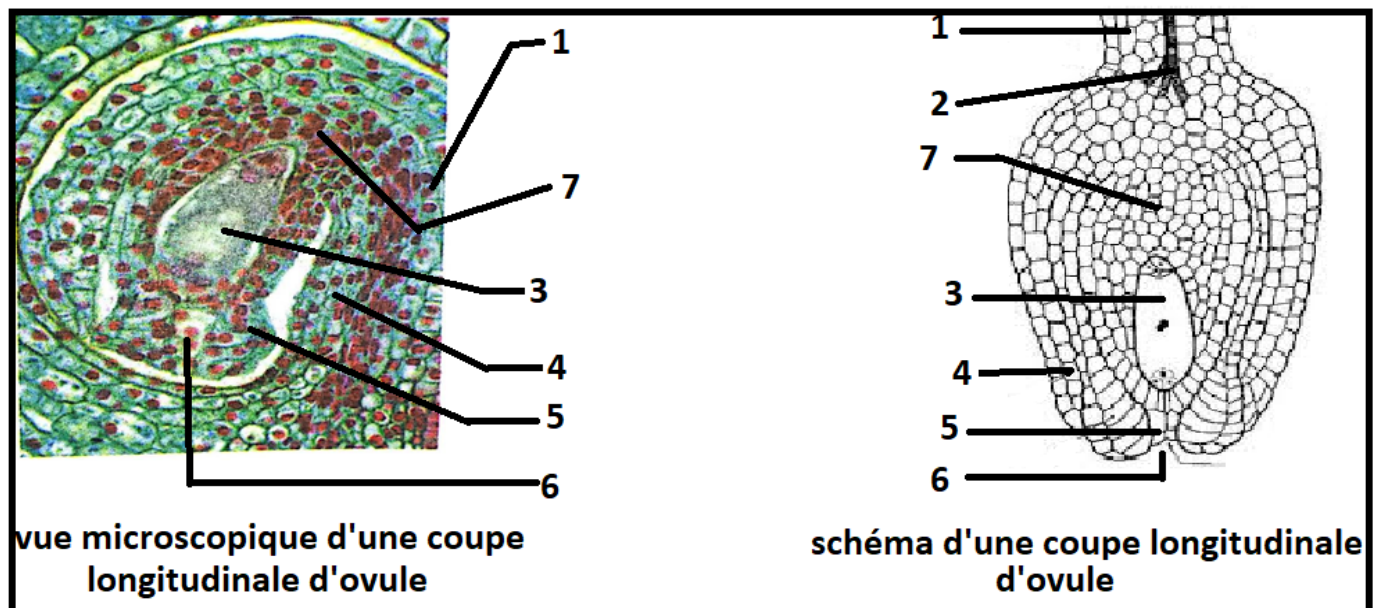
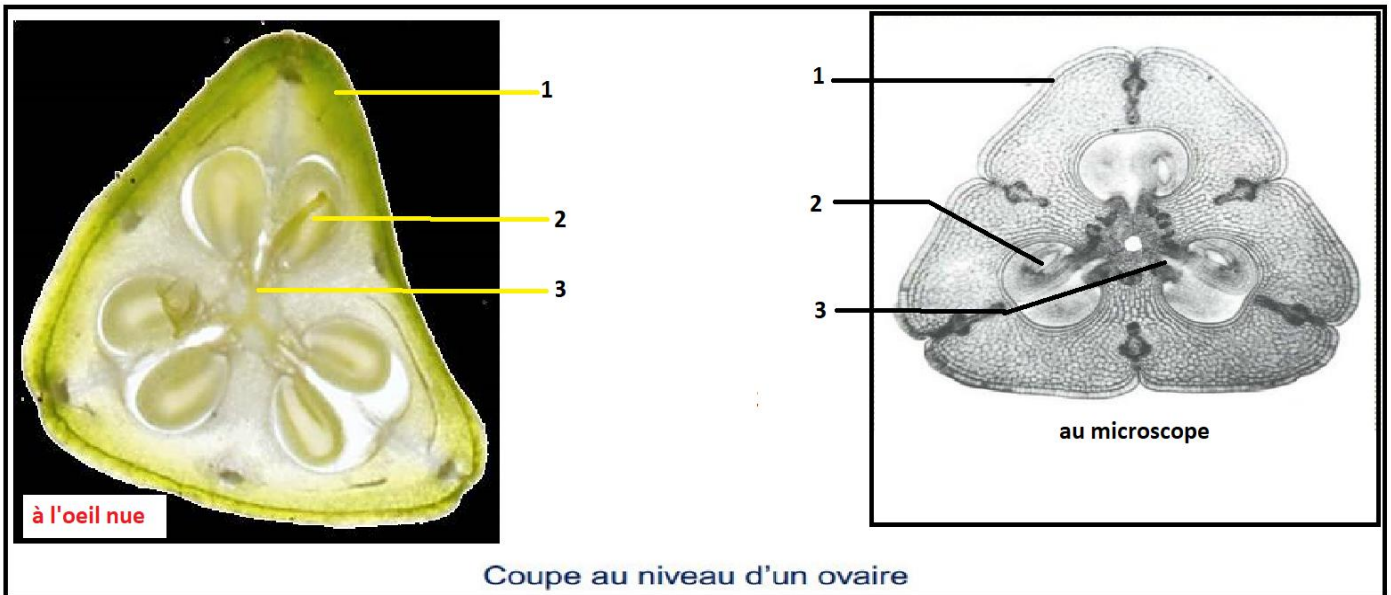
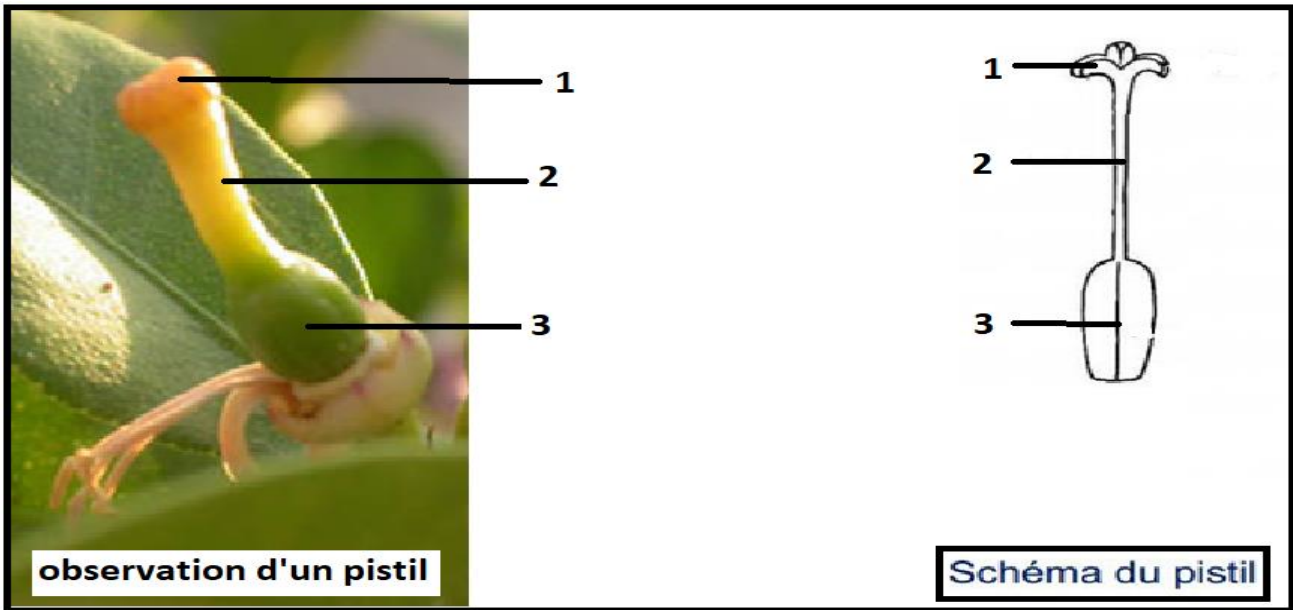


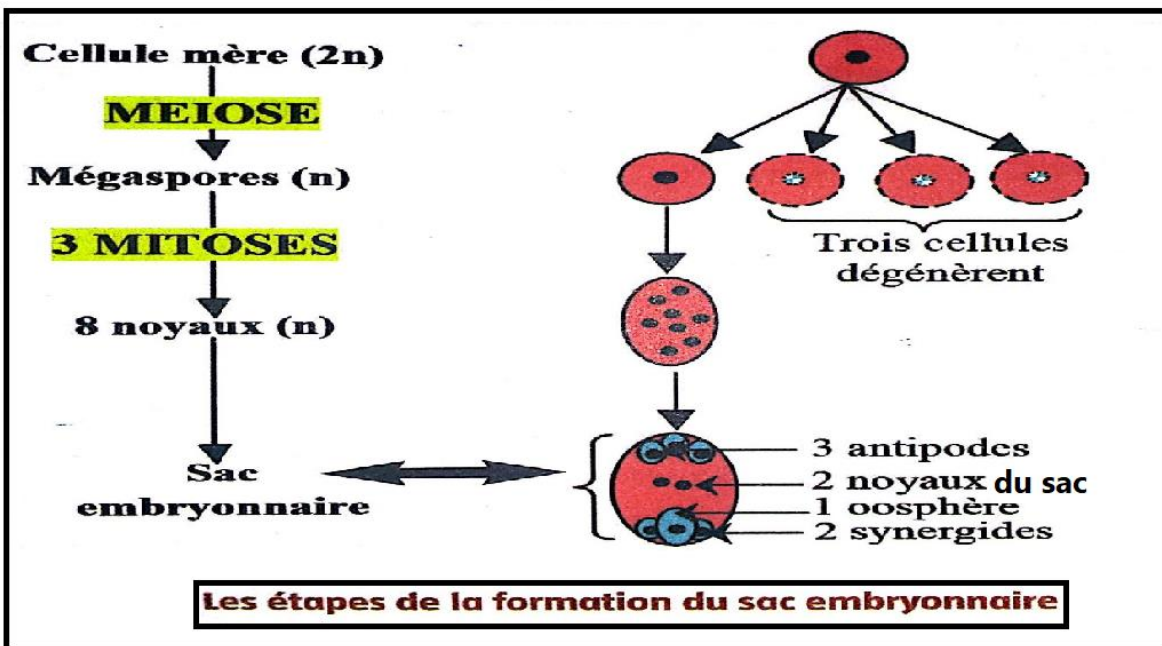
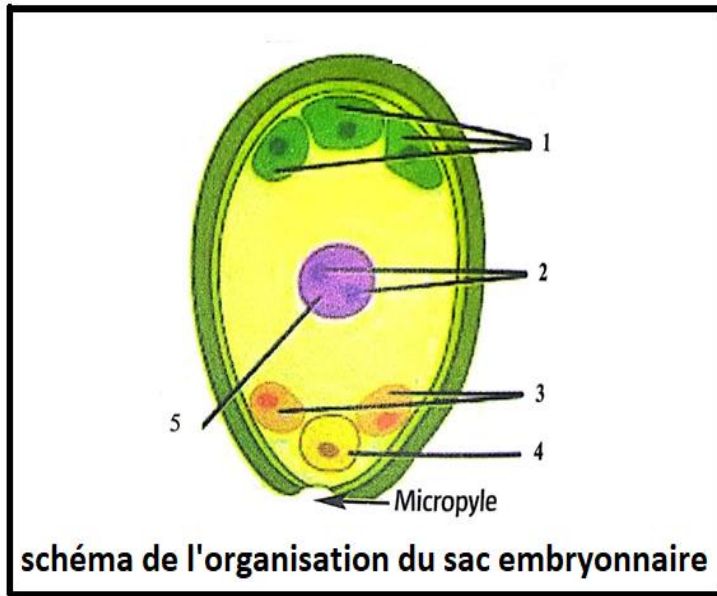
grains de pollen





d- Les étapes de la formation du grain de pollen





● **Expérience 1**
 On place un capuchon de gaze autour d'une fleur non épanouie de tulipe.
 On laisse ensuite cette fleur s'épanouir à l'intérieur du capuchon.

1. étamines
 2. pollen
 3. pistil.

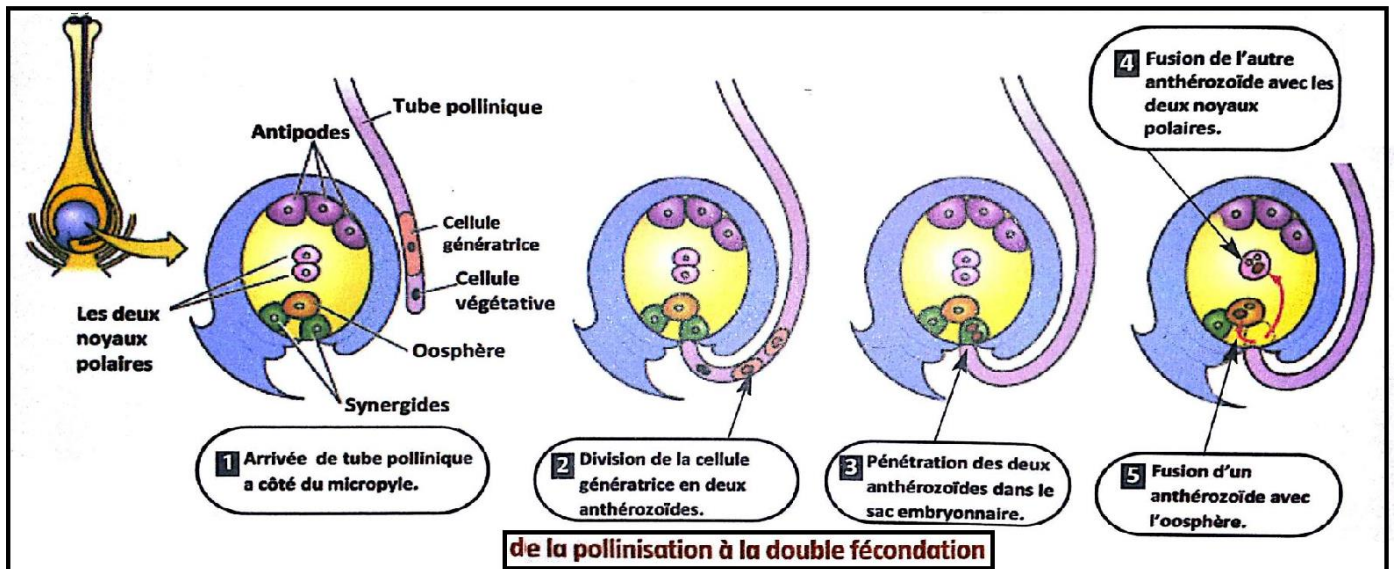
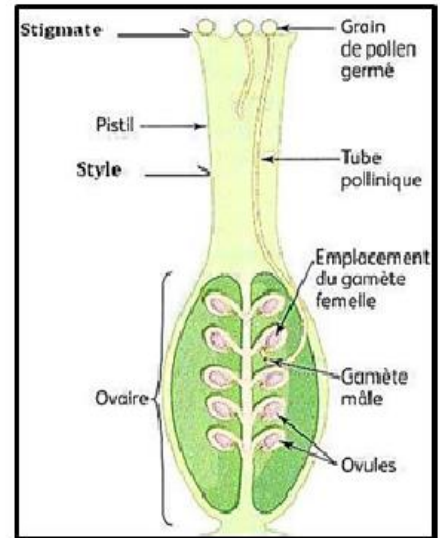
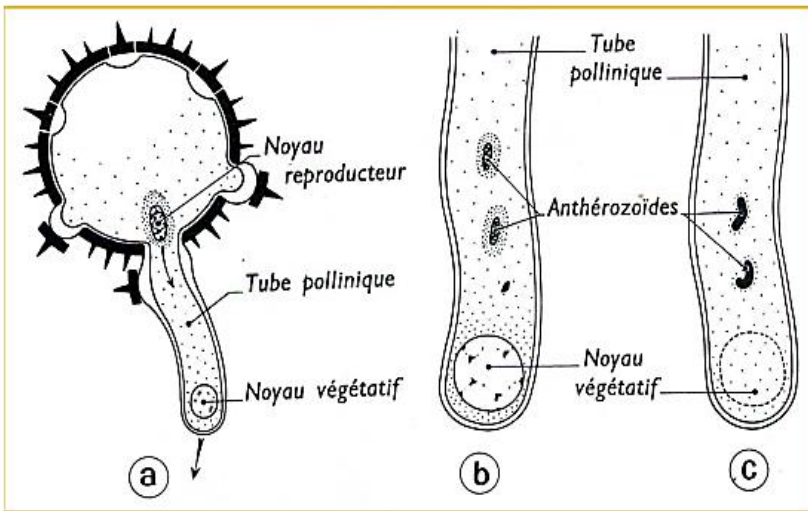
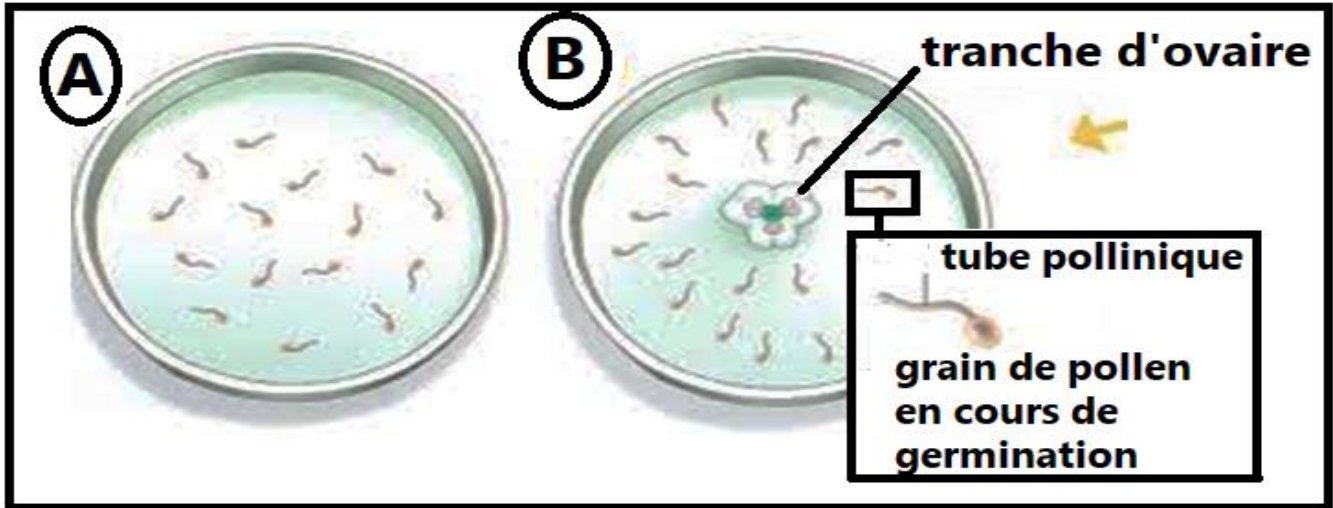
Fruit mûr avec graine

● **Expérience 2**
 On coupe les étamines d'une fleur non épanouie et on l'entoure d'un capuchon de gaze.

Pas de fruit ni de graine

● **Expérience 3**
 Même expérience qu'en 2, mais lorsque la fleur est épanouie, on ouvre la gaze le temps de déposer sur le pistil le pollen d'une autre fleur de tulipe.

Fruit mûr avec graine



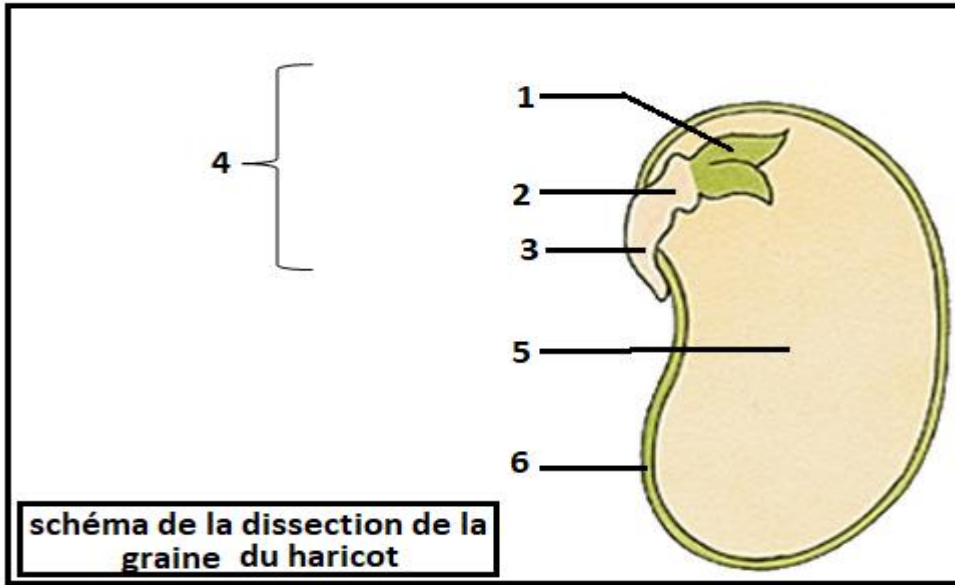


schéma de la dissection de la graine du haricot

